

There are numerous public facilities and services, which must be provided by local government to meet the health, safety, convenience and cultural needs of the community. The need for these services and the degree to which they are provided is dependent upon the size and density of development, the distribution of the population, and the financial resources available. The following inventory of existing community facilities, in conjunction with population and housing projections, will help to determine the future needs of the township. The adequacy and availability of these services and facilities are extremely important to all area residents as they reflect the quality, convenience, and general character of the community as a place to live.

## **PUBLIC SCHOOLS**

The Pennsylvania General Assembly is charged by the State Constitution to provide “for the maintenance and support of a thorough and efficient system of public education to serve the needs of the Commonwealth.” School Boards are provided broad authority by the Pennsylvania School Code to establish, equip, furnish, and maintain the public schools in the district. To support these activities, school boards are provided authority to levy taxes, borrow funds, obtain grants, and expend funds as outlined in the Pennsylvania School Code and other state and federal laws.

Conewago Township is a member of the Lower Dauphin School District which provides public education for students in Hummelstown Borough and Conewago, Londonderry, South Hanover, and East Hanover Townships. The school district has elementary schools in each municipality in the district, but the “flexible boundaries” that the district employs keeps class sizes balanced with an average class size in the low to mid twenties. Elementary school students, those in grades kindergarten through fifth grade, in Conewago Township attend Conewago Elementary School, or Londonderry Elementary School. Any students with special needs in Conewago Township attend Londonderry Elementary School. The middle school accommodates grades 6-8 and the high school contains grades 9-12. Both the Lower Dauphin Middle School and the Lower Dauphin High School are located in Hummelstown Borough. The mission of the Lower Dauphin School District is “to ensure that all students develop the knowledge, skills, and attitudes which enable them to reach their potential as productive and responsible citizens, family members, and lifelong learners.”

■ Conewago Elementary is located at:  
2809 Hershey Road  
Elizabethtown, PA 17022

■ Londonderry Elementary School is located at:  
260 Schoolhouse Road  
Middletown, PA 17057

### ■ **School District Trends**

■ Conewago Elementary School is the smallest of the elementary schools in the school district. In the 2005-2006 school year, Conewago Elementary enrolled 195 students. Londonderry Elementary School had the largest enrollment in the district with 423 students.

- Conewago Elementary School was identified as being over capacity in the 2001-2002 school year. The capacity of Conewago Elementary School is 181 students and the capacity at Londonderry Elementary is 556 students. Analyzing recent enrollment trends shows that Conewago Elementary continues to operate slightly over capacity.
- Total enrollment in the district decreased between the 2001-2002 school year and the 2004-2005 school year, but the student population increased in the 2005-2006 school year.
- The Pennsylvania Department of Education publishes enrollment projections based upon past trends and resident live births. The total enrollment in the district is expected to decrease every school year through the 2015-2016 school year. Between the 2005-2006 and 2015-2016 school years, the district is projected to see a decrease in enrollment of 355 students, a percentage decrease of 8.9%.
- Currently, the school district is awaiting the results of a feasibility study that would determine the location of growth areas in the school district. The study could assist the district on decisions involving expansion or renovation at its facilities.
- There are not any immediate plans to expand Conewago Elementary School. The school only has 10 to 12 classrooms currently, but the lack of public sewer facilities in the area has prohibited the school's expansion.

#### ■ **The Influence of Home School and Internet School**

- In the 2004-2005 school year, there were 71 students in the Lower Dauphin School District enrolled in home school programs. This was the second greatest amount of students, of all the districts in the county.
- The Dauphin County Comprehensive Plan reports that there are 50 private elementary schools and 11 private secondary schools operating in Dauphin County.
- Statewide, the number of children enrolled in internet schools is increasing. Although these schools offer a different method of education, they do pose a direct financial burden on the school district. The school district receives tax dollars directly from the state. For every student that is living in the district, but attending internet schooling, a certain dollar value is taken from the total amount that the school district would receive, and is given to the internet school. Currently, the school district has several virtual learning opportunities including Math Masters and Study Island. Math Masters is a summer program whereby elementary school students, either at school or at home, can practice their math skills. Study Island is a computer-based program intended to prepare students for the PSSA tests.
- Home schooled students and those attending cyber schools that live in the Lower Dauphin School District are invited to participate in extracurricular activities, such as athletics.

#### ■ **Colleges and Universities**

- Conewago residents have access to several institutions of higher learning. Although there are no colleges or universities located within the township, there are several colleges and universities located in proximity to the township. The following colleges, universities, and institutions of higher learning are located within a 30 mile radius of the township<sup>1</sup>:
  - Central Penn College (Cumberland County)
  - Dixon University Center (Dauphin County)
  - Elizabethtown College (Lancaster County)
  - Evangelical School of Theology (Lebanon County)
  - Franklin and Marshall College (Lancaster County)
  - Harrisburg Area Community College (Dauphin County)

---

<sup>1</sup> Epodunk.

- Lancaster Bible College (Lancaster County)
- Lancaster Theological Seminary (Lancaster County)
- Lebanon Valley College (Lebanon County)
- Messiah College (Cumberland County)
- Millersville University (Lancaster County)
- Penn State Harrisburg (Dauphin County)
- Penn State York (York County)
- Pennsylvania College of Art and Design (Lancaster County)
- Pennsylvania College of Medicine – Penn State University Hershey Medical Center (Dauphin County)
- Temple University – Harrisburg Campus (Dauphin County)
- Thaddeus Stevens College of Technology (Lancaster County)
- Kaplan Career Institute (Dauphin County)
- Widener University – Harrisburg Campus (Dauphin County)
- York College of Pennsylvania (York County)

## ***CONEWAGO TOWNSHIP MUNICIPAL BUILDING***

Conewago Township's Municipal Building is located at the southeast corner of Ridge Road and Old Hershey Road, and is considered to be in good structural condition. The building contains offices and a meeting room where the Board of Supervisors, Planning Commission and other committee meetings are held. In addition, the township's equipment is serviced in the garage area and yard adjacent to the municipal building. The salt shed was recently upgraded to better serve all roads in the township during the winter months.

## ***POLICE PROTECTION***

Troop H of the Pennsylvania State Police provides police coverage for all areas of the township. Troop H Headquarters is located at 8000 Bretz Drive in Harrisburg.

## ***FIRE PROTECTION AND EMERGENCY SERVICES***

There are no fire companies or emergency services providers located in Conewago Township, but the township receives fire protection services and basic and advanced life support emergency services from several surrounding organizations. Basic life support (BLS) services refer to the level of service provided to stabilize patients for further care at a doctor's office or hospital. BLS services are provided by Emergency Service Technicians (EMTs). Advanced life support (ALS) services are administered by paramedics, who are able to administer medicine. ALS services are required in emergency situations when the patient requires immediate intensive care. Conewago Township is served by five fire companies.

### **■ Elizabethtown Fire Company**

- The Elizabethtown Fire Company provides service to the southern part of the township, specifically the area located east of Old Hershey Road, south of the Pennsylvania Turnpike, and west of Bellaire Road.
- It is estimated that the Elizabethtown Fire Company responds to between 10 and 20 calls in Conewago Township, annually. Many of these calls involve vehicular assistance on SR 743 or the Pennsylvania Turnpike. The average response time to Conewago customers is 10 minutes.
- The company is comprised entirely of volunteers, and Conewago Township does provide funding to the organization.
- Apparatus includes two engines, an aerial unit, and two squad vehicles. The company acquired a new engine in March of 2007.
- The company considers its service to Conewago Township to be adequate and there were no immediate needs that were identified by the company.

■ **Lawn Fire Company / Lawn EMS**

- The Lawn Fire Company is located in South Londonderry Township, Lebanon County, and provides service to the portion of the township south of Brandt Road and east of Bellaire Road.
- The Lawn Fire Company estimates that it responds to between 30 and 40 calls annually, most of which are vehicle accidents. The estimated average response time is between 6 and 8 minutes. In addition to fire services, the Lawn Fire Company EMS provides basic life support services.
- The company is operated by approximately 20 volunteer staff. Several staff members have been trained as Emergency Medical Technicians (EMTs) and Vehicle Rescue Technicians, or have received Firefighter 1 Certification.
- Apparatus for the company includes a pumper tanker and an older compressed foam unit, which is planned for replacement. Future needs of the company include replacement of the current pumper tanker, and purchase of an additional pumper tanker.
- The Lawn Fire Company receives funding from Conewago Township.

■ **Londonderry Fire Company / Londonderry EMS**

- The Londonderry Fire Company and Londonderry EMS serve the southwest portion of Conewago Township. The company acts as the first responder for those areas of the township west of Old Hershey Road and south of Colebrook Road, and provides service to the entire length of SR 283 in the township.
- The company is staffed with approximately 50 volunteers that provide fire and basic life support EMS services. Approximately 15 volunteers are trained as EMTs. It is estimated that the company responds to between 25 and 50 calls annually, many of which are vehicle accidents. The average response time is about 10 minutes.
- Apparatus of the Londonderry Fire Company and EMS includes an engine rescue, a pumper tanker, an open interface engine, a utility truck, a duty officer vehicle, a seven person boat, and an ambulance.
- The Londonderry Fire Company receives funding from Conewago Township. Additional funds are received from fundraisers such as bingo nights and chicken barbecues. The company considered its manpower and apparatus to be sufficient to adequately serve Conewago Township and the rest of its service area, and there were no immediate needs that were identified by the company.

### ■ **Campbelltown Volunteer Fire Company / QRS**

- The Campbelltown Fire Company provides service to the northeast portions of Conewago Township, specifically, those areas of the township located east of SR 743 and north of Schoolhouse Road.
- The company has over 100 volunteers; approximately 40 volunteers are active. The company has a quick response unit which provided basic life support services. Approximately 5 volunteers are trained as EMTs and 4 are trained as first responders.
- Apparatus of the company includes two 4,000 gallon tankers, one of which is a year 2006 model. Other apparatus include two engines, a heavy rescue, a utility vehicle, a chief's vehicle, a quick response unit, and a trailer and golf cart. The golf cart tends to be used in situations that occur in more rural areas, such as in wooded locations. All of the vehicles are in good condition. The engines get pump tested annually.
- In addition to the tanker that the company purchased in 2006, the company purchased a new rescue truck in 2007. It is estimated that the 1973 fire engine will be replaced in the next 5 to 10 years.
- The estimated response time for a location in Conewago Township is 8 to 9 minutes. The average annual number of calls that the company responds to in Conewago Township is approximately 20.
- The company currently has sufficient manpower, but notes that they never turn volunteers away. Because many of the volunteers have full-time jobs, the number of responders that are available on any given evening varies.
- In addition to Conewago Township, the Campbelltown Volunteer Fire Company also serves as a first responder to portions of South Annville and South Londonderry Townships in Lebanon County. The company receives fireman's relief funding from all three of these municipalities. South Londonderry Township levies a fire tax of 1.5 mills, which generates approximately \$40,000 annually for the Campbelltown Fire Company, after being split with another fire company in the township. The company also raises funds through bingo nights, spaghetti dinners, and chicken barbecues.
- The company has approximately three volunteers which have their Firefighter 1 certification; some of the volunteers have also been trained in advanced vehicle rescue.
- In addition to the plans that the company has for the purchase of new apparatus, there were no other future plans or needs identified by the company.

### ■ **Hershey Volunteer Fire Company**

- The Hershey Volunteer Fire Company serves as a first responder for the northwestern portion of Conewago Township. The company has 82 volunteers; approximately 35 of those volunteers are considered to be active. The company considers a volunteer to be active when he or she responds to 10% or more of the total number of calls; the average volunteer of the company responds to 18% of all calls.
- The company also had 16 state certified EMTs at the end of the summer of 2007. The EMTs of the Hershey Volunteer Fire Company are dispatched for medical assistance in situations where the University EMS has an extended response time.
- The Hershey Volunteer Fire Company responds to approximately 30-40 calls annually in Conewago Township, and has a response time of 8-12 minutes for most locations in its service area in the township.
- Apparatus owned by the company includes four engines, a 95 foot tower truck, a rescue vehicle, an air and light truck, a chief's van, a duty vehicle, a utility vehicle, and a special unit for fire police use and fire prevention training. All of the vehicles are equipped with a laptop with GPS navigational equipment and mapping of all hydrant locations. The company is in the process of having the tower truck refurbished. Mutual aid from

Hummelstown and Elizabethtown fire companies and others will support the company in any situations that require a tower truck while the vehicle is being refurbished.

- There are several volunteers of the company that have had special training, including Hazmat Training. The company has members on the Dauphin County Hazmat Team at the technician and operations levels, and received national recognition for the train wreck in Hershey in 2006 that involved hazardous materials. The company is also highly involved with fire prevention training, especially during October, which is National Fire Prevention Month. Fire prevention training, including a smoke tower, is held annually at several locations including Conewago Elementary School.
- The company receives funds in the form of Fireman's Relief from Conewago Township, and from a mail solicitation to its residents. The majority of funds for the company come from fundraisers and corporate donors. Several corporations in the Hershey Area, such as the Hershey Medical Center provide financial support, while other corporations, such as the Hershey Foods Corporation and Hershey Entertainment and Resorts Corporation offer an in-kind service by letting their employees respond to calls while at work.
- Manpower at the company is more than adequate. The company admits that it is very fortunate to have such a solid volunteer base that includes 13 junior members. In fact, the company has so many members that there is an equipment shortage in that the number of members exceeds that number of seats on the apparatus.
- Other than the plans to refurbish the tower truck, the company does not have any current plans to purchase or replace equipment. There have been preliminary discussions relating to the hiring of an administrative person for the department. This position, if approved, would be the only paid position of the department.
- The company also admits that there are some limitations geographically and that response times to locations such as the Stone Creek Development on Middletown Road, and the Pennsylvania Turnpike in Conewago Township, can be excessive. Preliminary discussions have occurred that include plans for a second Hershey station that would be located adjacent to Conewago Township, although the costs associated with opening a new station dampen the possibility. The new station would service the area known as "The Hills", which is considered to be the hills behind the Hershey Medical Center in Derry Township, and the areas along Middletown Road. These discussions are in their infancy and opening a second station is considered to be a long term possibility.

#### ■ **Northwest EMS**

- Northwest EMS is based out of Elizabethtown and provides basic and advanced life support services to the portion of Conewago Township located east of Old Hershey Road and south of the Pennsylvania Turnpike, in addition to many areas in northwestern Lancaster County. The company is also responsible for advanced life support services for the portions of the township which receive basic life support services from Londonderry Fire Company EMS and Lawn Fire Company EMS.
- Northwest EMS responded to 37 calls in Conewago Township in 2006, most of which involved general medical problems. The average response time for calls in Conewago Township is six minutes.
- Northwest EMS employs 50 paid staff and 15 volunteers, including several staff members that have special training in medic and advanced cardiac life support (ACLS) services.
- The unit operates six ambulances, two wheelchair vans, and two quick-response units, all of which are functioning. The unit recently received a four-wheel drive ambulance and a conventional ambulance.
- In addition to purchasing new equipment, the unit is also expanding one of its buildings to add eight new ambulance bays and a training center.

- Conewago Township does not currently provide funds to the Northwest EMS. The company has indicated that although they feel that they are adequately able to respond to calls in Conewago Township, any potential funds received from the township would be welcomed and could be allocated towards equipment and fuel.

■ **University EMS**

- University EMS is located in Hershey and provides basic and advanced life support services to those areas in the township located north of the Pennsylvania Turnpike.
- University EMS employs 64 staff, both full-time and part-time. Response time in Conewago Township is approximately eight minutes.
- The company has six transport units, one non-transport unit, one squad car, two wheelchair vans, and one disaster trailer in active service.
- University EMS does not currently receive funding from the township. The response to the township is considered adequate and the company has no immediate or future plans for vehicle replacement or upgrades within the company.

## ***REFUSE DISPOSAL AND RECYCLING***

Private companies and individuals are responsible for refuse collection and disposal in the township through individual contracts with waste haulers.

Dauphin County Recycling has located a drop-off bin at the Conewago Township Municipal Building. The recycling center is open 24 hours a day, seven days a week and accepts:

- Corrugated Cardboard
- Newspapers and Inserts
- Magazines and Catalogs
- Telephone Books
- Plastic #1 and Plastic #2 (empty food, beverage, and household containers)
- Metal Cans
- Clear, Green, and Brown Glass

The Dauphin County Solid Waste Management and Recycling Department has noted that the recycling center in the township is heavily used. Because of the high degree of use, it is important that the residents of the township and those using the center properly prepare their recyclables and place them in the bins to ensure cleanliness in the area. The Dauphin County Recycling Hotline provides information on proper ways to prepare recyclables and can be accessed by calling 717-780-6351.

## ***ROAD MAINTENANCE***

The township road maintenance equipment includes three dump trucks, three snowplows and cinder spreaders, a grader, a roller, and a front-end loader. The grader also has a snowplow on it, allowing the township to utilize four snowplows. The township maintains a garage and yard where equipment and supplies are stored, located behind the Conewago Township Municipal Building at Ridge Road and Old Hershey Road. The township also services equipment at this location.

## ***WATER SYSTEM***

There is no public water supply currently available to Conewago Township residents, except for residents in the Laurel Woods and Hills of Waterford developments located in the northwest corner of the township. Individual wells provide water for the remainder of township residents and businesses. Pennsylvania American Water Company is considering servicing new areas in the township. These areas could include portions of SR 743, Old Hershey Road, Ridge Road, and Roundtop Road.

## ***SEWERAGE SYSTEM***

Public sewerage systems are installed in the area of Laurel Woods and Hills of Waterford developments. The rest of the township relies solely on on-lot sewage systems to provide sanitary waste disposal. The use of on-lot sewerage is typical of most rural communities of low density.

Conewago Township adopted an Act 537 Sewage Facilities Plan in 1998. The plan includes an evaluation of sewage disposal methods currently in use, limitations for on-lot disposal, groundwater characteristics, natural resources, community planning, and sewage disposal alternatives. The Board of Supervisors elected the following alternatives for implementation:

### **■ Laurel Woods / Basler Road / Roundtop Road (Phase I)**

- Alternative 3B to implement within 0 to 5 years. This alternative included two pump stations with a force main in Sand Hill Road.
- Alternative 3E will be considered a possible optional layout to be determined at the preliminary design stage. This alternative included one pump station on Roundtop Road that pumps to Church Road to a gravity interceptor and connects to the sewer in Jacob's Creek subdivision in Derry Township.

### **■ PA Route 743 / Old Hershey Road (Phase II)**

- On-lot disposal system management program for 0 to 5 years.
- Alternative 4A within 5 to 10 years. This alternative includes a mostly gravity system with one pump station and a gravity interceptor connecting to Jacob's Creek subdivision in Derry Township.

Since the adoption and DEP approval of the Act 537 Plan, Alternative 3B has been implemented in the area of Laurel Woods and the Hills of Waterford. Alternative 4A is currently being planned for in the area of SR 743 and Old Hershey Road. These sewer improvement areas, referred to as A-1 and A-2 respectively, are graphically displayed in **Map 4-1**.

The plan also indicated that proper wastewater disposal should be promoted on a township-wide basis through the following non-structural initiatives or policies:

- Problems in the Deodate and Bachmanville areas included older systems in use, relatively small lot sizes, and fecal coliform bacteria detected in the groundwater. Because public sewer is not a viable option for these and other areas of the township, the Board of Supervisors determined that an on-lot sewage disposal system management program is necessary for all areas outside of the future sewer service areas. The program was designed to address the following maintenance responsibilities:

- The removal of septage to avoid the overflow of sludge or solids into the absorption field. Septic tanks would be required to be pumped within three years of adoption and DEP approval of the plan and at least once every five years thereafter.
- Maintenance of surface contouring.
- Requirements for water conservation devices if such systems are found to be malfunctioning as a result of hydraulic overload.
- Maintenance of electrical, mechanical, and chemical components.
- Documentation of septage pumping and hauling which indicates disposal at a DEP permitted site.
- Small flow treatment facilities will be permitted by the Board of Supervisors on a case-by-case basis outside of the five year sewer service area subject to the requirements of the state code.
- The township will adopt a retaining tank ordinance similar to the DEP draft holding tank ordinance.
- The township will permit the use of wastewater denitrification systems provided that the Board of Supervisors approves a maintenance agreement which shall be attached to the deed of the property.

## ***PARKS AND RECREATION***

The Board of Supervisors adopted the Conewago Township Parks and Recreation Plan in July of 2005. The plan was developed to ensure that residents of the township have reasonable access to active and passive recreation opportunities regardless of age or other factors. The plan consisted of the following elements:

- Community-wide survey
- Inventory and analysis of existing facilities
- Identification of deficiencies and projected needs
- Recommendations
- Implementation Strategies

The only two publicly owned recreation facilities in the township are the Danny Fisher Memorial Field and Conewago Elementary School. Both of these facilities are centrally located in the township, but the Danny Fisher Memorial Field has not been developed for active recreation use.

Conewago Elementary School is the predominant recreation provider in the township; however, it is primarily used for school-related activities. The Lower Dauphin School District does have a use policy established by which private groups can request use of any of its school recreational or meeting facilities.

The Hills of Waterford Mini Park and the Mount Calvary Christian School recreational facilities are privately controlled recreational facilities. Although these two facilities will provide additional recreational opportunities, their private ownership status will limit their availability to a select group of residents in the township.

### ■ **Analysis and Conclusions of the Parks and Recreation Plan**

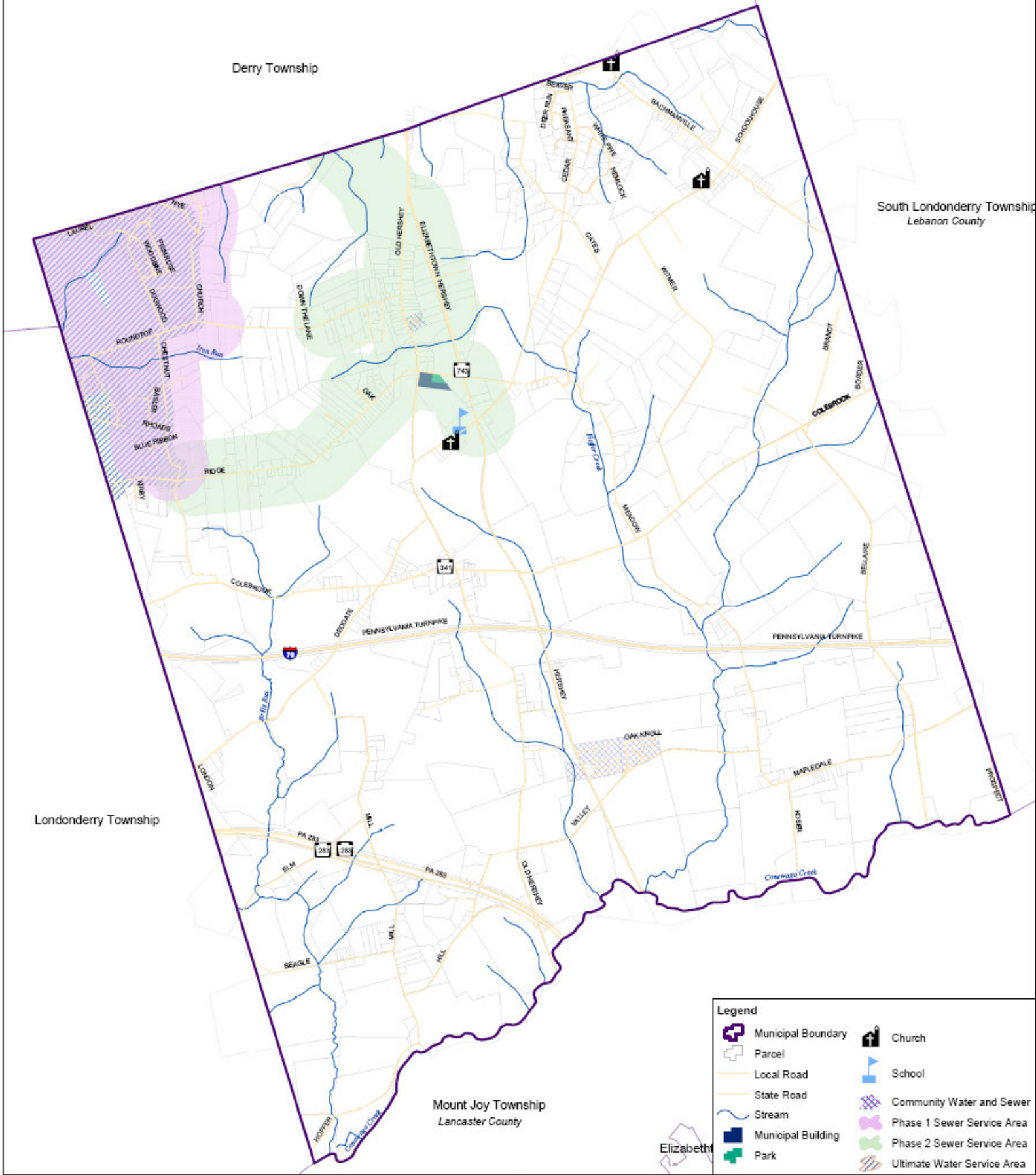
- National Recreation and Parks Association guidelines indicate that the township is lacking in the amount of land acreage that is being used for various types of park facilities.
- In general, responses from the citizen survey supported parks and recreation in the township.

- The plan set forth an overriding goal and a series of objectives to address parks and recreation needs of the township. Among the objectives set forth in the plan is the development of a centralized community park for use of the residents in the township.
- As a result of this plan, the township has amended their subdivision and land development ordinance to update the land dedication and fee in lieu of land dedication requirements, and has established an advisory Parks and Recreation Board.

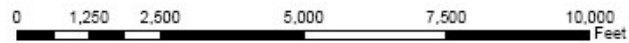
## ***CHURCHES AND FAITH BASED ORGANIZATIONS***

There are several churches and faith based organizations located in the community and attended by township residents. Churches in the township include:

- Shenk's Union Church – Schoolhouse Road
- Stauffer's Mennonite Church – Bachmanville Road
- Bachmanville Church of the Brethren – Schoolhouse Road



Legend	
	Municipal Boundary
	Parcel
	Local Road
	State Road
	Stream
	Municipal Building
	Park
	Church
	School
	Community Water and Sewer
	Phase 1 Sewer Service Area
	Phase 2 Sewer Service Area
	Ultimate Water Service Area



**Map 4-1**  
**COMMUNITY FACILITIES**

**CONEWAGO TOWNSHIP COMPREHENSIVE PLAN**  
**2008**

PA State Plane South, NAD 1983  
 Base Map Source:  
 Copyright (c) 2005, Dauphin County GIS  
 Copyright (c) 2007, Tri-County GIS  
 Copyright (c) 2007, RETTEW Associates, Inc.



PROJECT NO. 05-01141-007